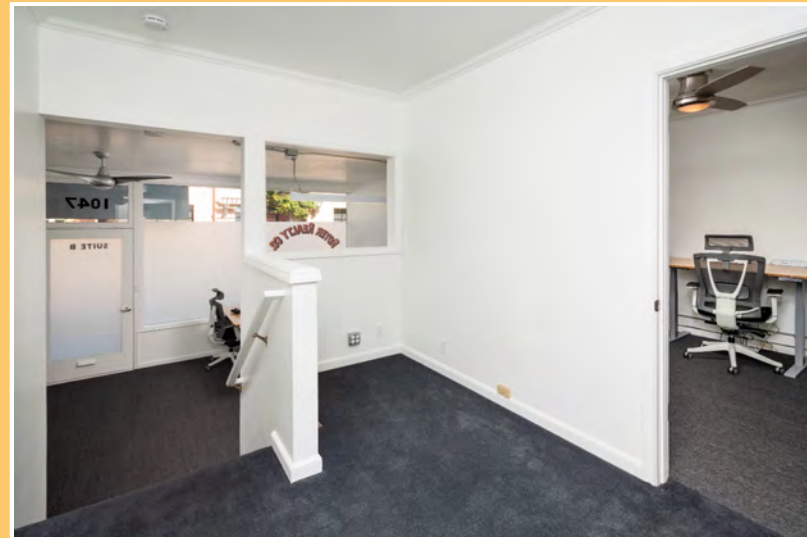


FOR LEASE

1047

STARTUP
SPACE

MULTI-USE SPACE AVAILABLE



- FLEXIBLE LEASE TERMS & SPACE PLANS
- UPTO APPROX. 1,520 SF CONTIGUOUS SPACE AVAILABLE
- WALKING DISTANCE TO THE DOWNTOWN REDWOOD CITY CALTRAIN STATION & OTHER DOWNTOWN AMENITIES
- ON-SITE PARKING AVAILABLE, NEGOTIABLE

CALL WITH QUESTIONS OR FOR MORE INFORMATION.

503.816.7726 OR 408.910.6278

RENDERINGS ARE INTENDED AS A GENERAL REFERENCE. ACTUAL AREAS, FEATURES, MATERIALS, FINISHES, FURNISHINGS OR LAYOUT MAY DIFFER THAN SHOWN.

